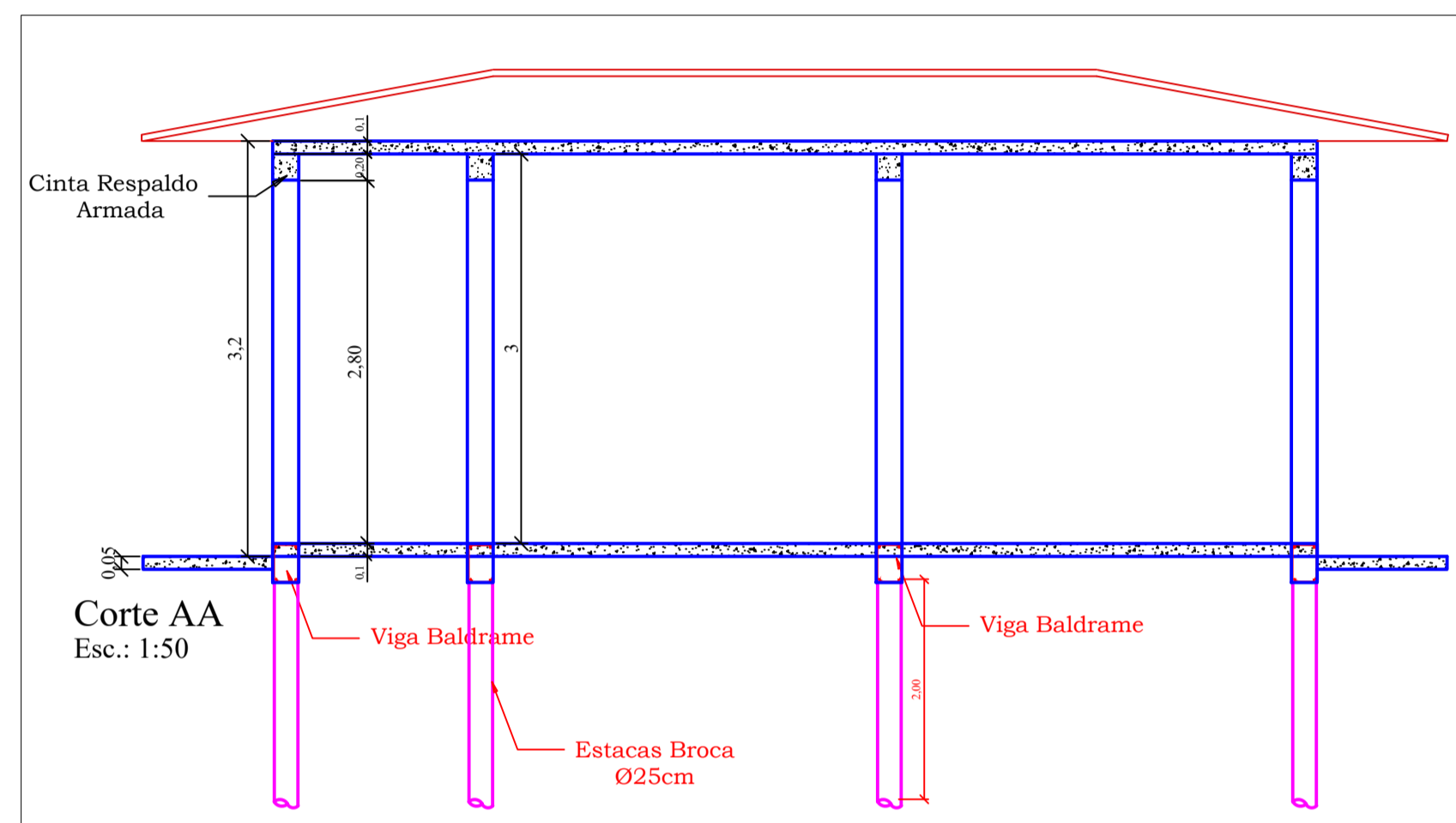
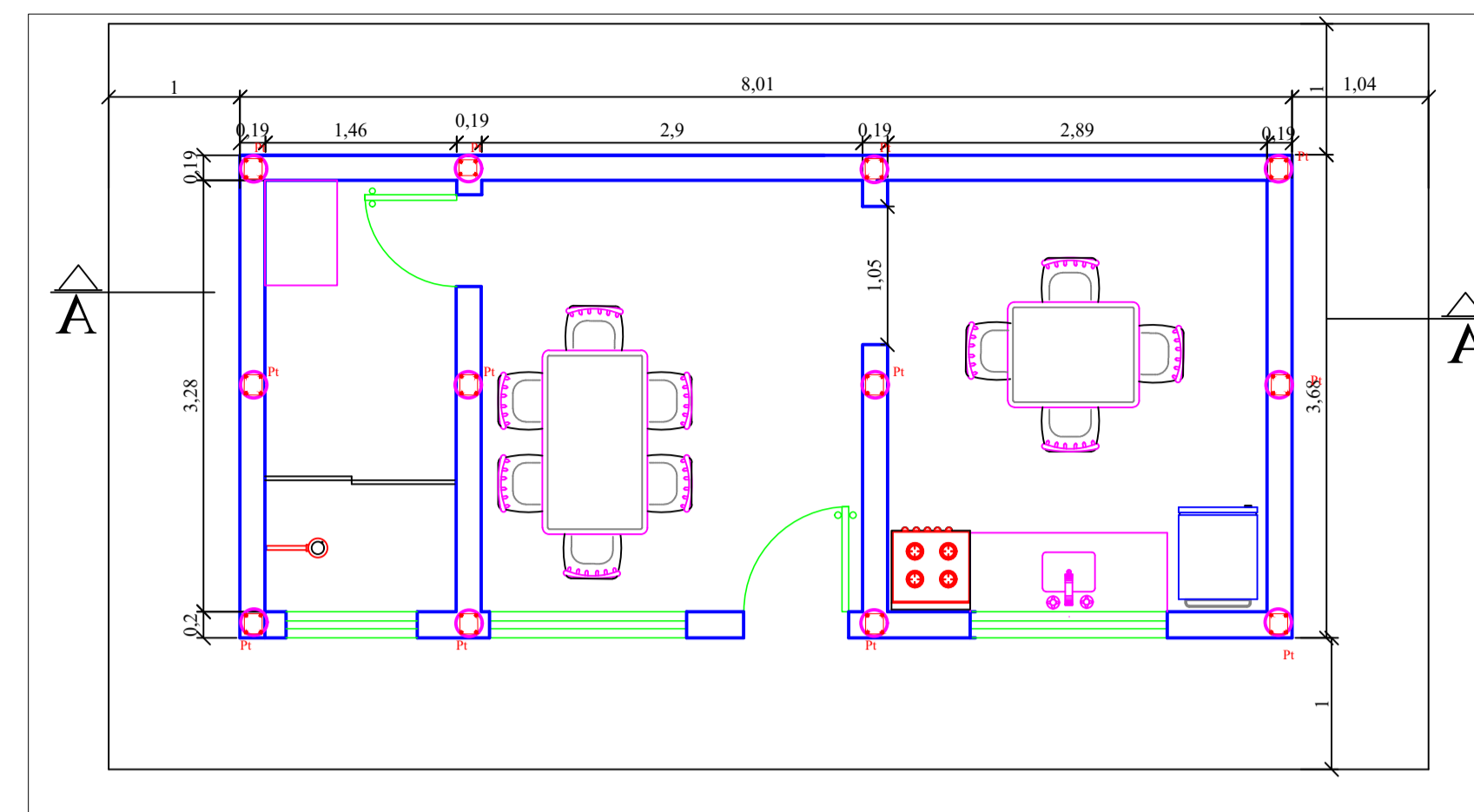
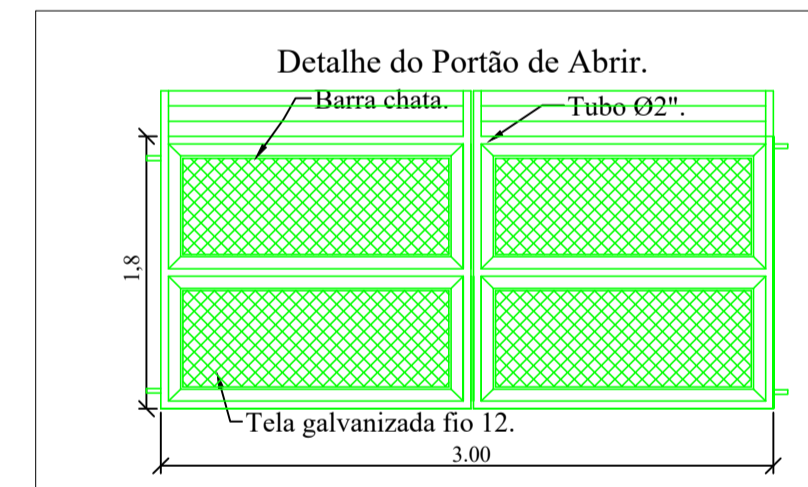
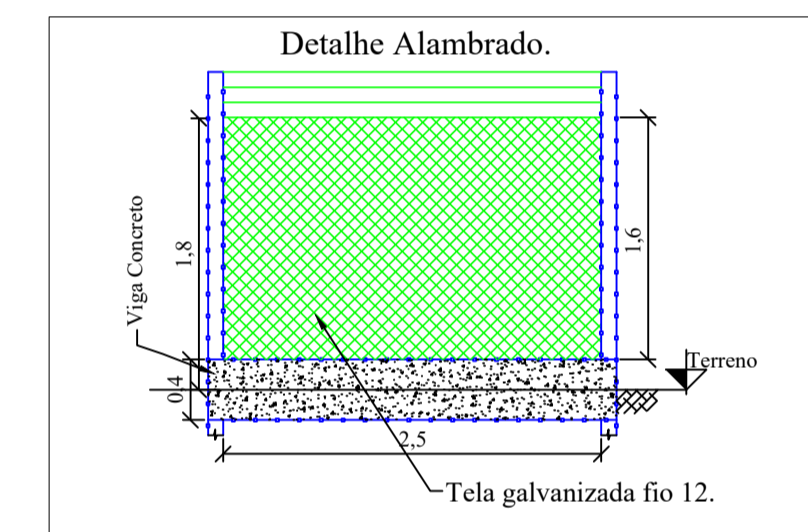
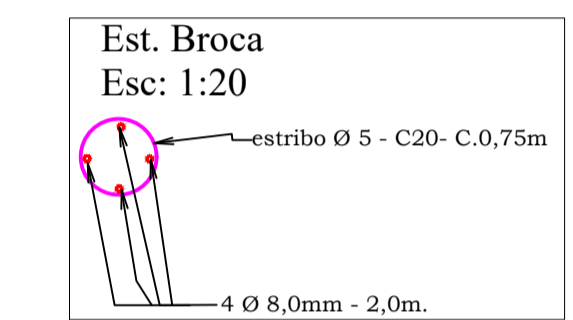
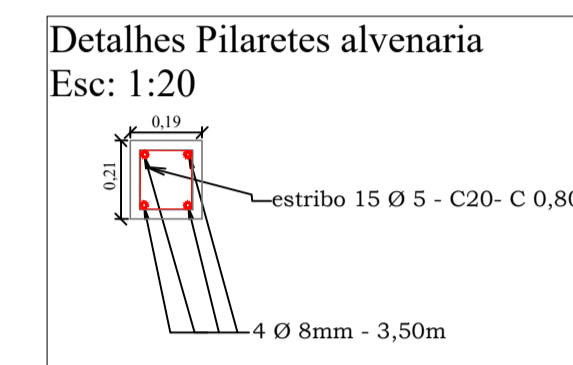
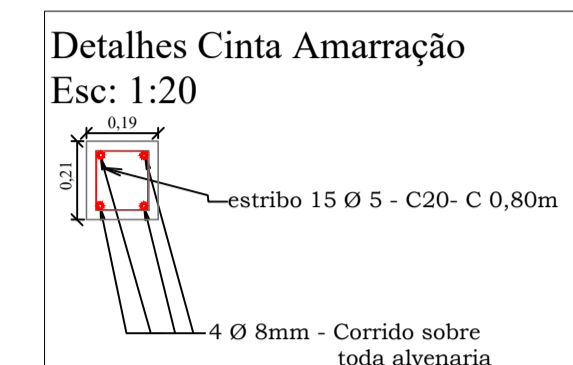
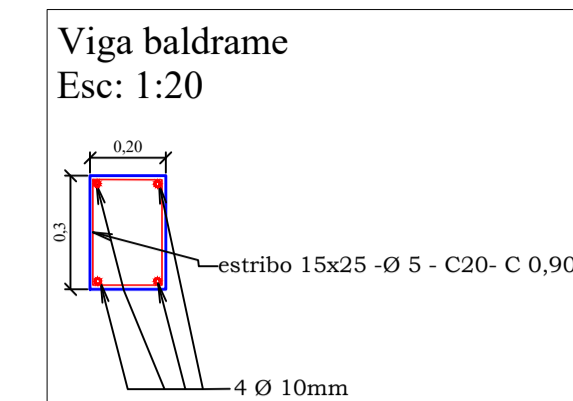
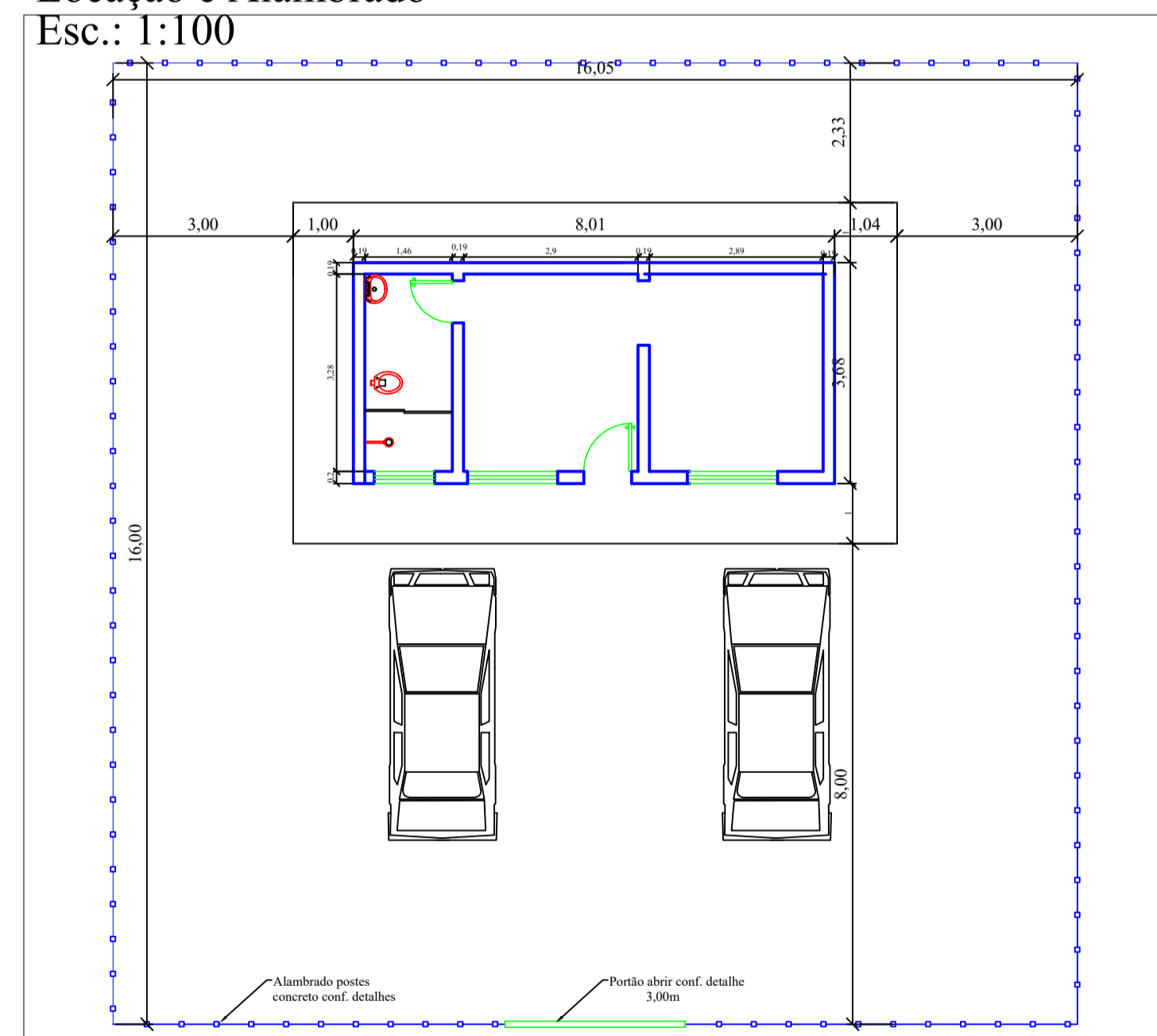


Estrutural



Locação e Alambrado Esc.: 1:100



- NOTAS:
- Concreto das Estruturas FCK=25,0 Mpa, brita 01.
 - Alvenaria Blocos concreto estrutural 19x19x39cm, junta 20mm riscada, acabamento aparente (sem reboco)
 - Laje treliçada (treliça h 8)
 - Vergas e contravergas nos vãos de portas e janelas, usando canaletas preenchidas com concreto armado.

TÍTULO	DATA	ESCALA	ARQUIVO
RECEPÇÃO E COZINHA ETE		INDIC.	
PROJETO	AUTORES		
ARQUITETÔNICO/ESTRUTURAL	ENGº		
LOCALIDADE	CREA		
SACRAMENTO-MG	DESENV.		
SAAE Serviço Autônomo de Água e Esgoto.	DESENHO	VISTO	